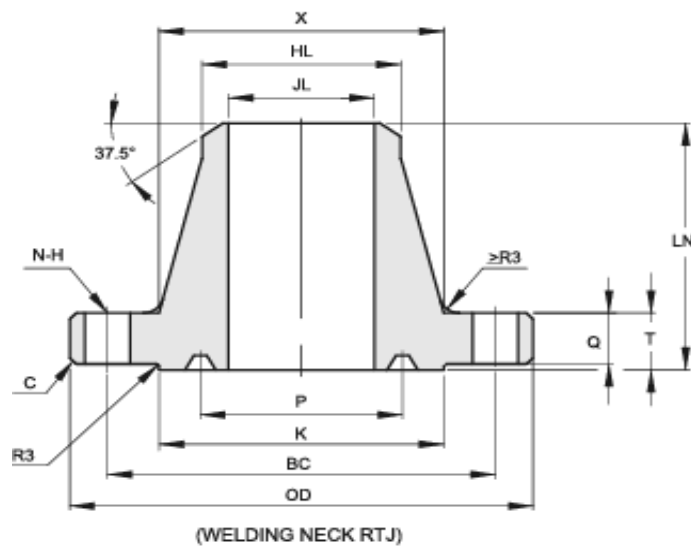
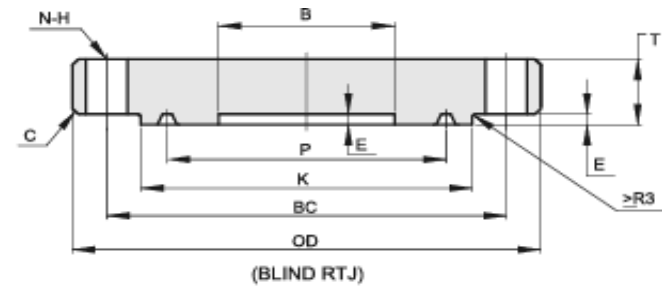


API 6A TYPE 6B 3000 PSI BLIND & WELDING NECK FLANGES



Size	B	OD	C	K	P	E	T	Q	X	BC	N	H	LN	HL	JL	R/RX
2 1/16"	53.2	215	3	124	95.25	7.9	46.1	38.1	105	165.1	8	26	110	60.3	50	24
2 9/16"	65.9	245	3	137	107.95	7.9	49.3	41.3	124	190.5	8	29	113	73	59.7	27
3 1/8"	81.8	240	3	156	123.83	7.9	46.1	38.1	127	190.5	8	26	110	88.9	74.4	31
4 1/16"	108.7	290	3	181	149.23	7.9	52.4	44.4	159	235	8	32	122	114.3	98	37
5 1/8"	131	350	3	216	180.98	7.9	58.8	50.8	191	279.4	8	35	135	141.3	122.9	41
7 1/16"	181.8	380	6	241	211.15	7.9	63.5	55.6	235	317.5	12	32	148	168.3	147.1	45
9"	229.4	470	6	308	269.88	7.9	71.5	63.5	299	393.7	12	39	170	219.1	189.7	49
11"	280.2	545	6	362	323.85	7.9	77.8	69.9	368	469.9	16	39	192	273	237.2	53
13 5/8"	346.9	610	6	419	381	7.9	87.4	79.4	419	533.4	20	39	-	-	-	57
16 3/4"	426.2	705	6	524	469.9	11	100	88.9	508	616	20	45	-	-	-	66
20 3/4"	527.8	855	6	648	584.2	13	121	108	622	749.3	20	54	-	-	-	74

Note:

1. RING NUMBER R or RX,
2. C should be the max value
3. Tolerance and Ring Gasket according to API 6A-20TH